

Welcome HOME

RESIDENT Monthly Expense Comparison

This chart will help you break down your current monthly expenses. Once complete, compare your cost to a lifestyle with the comprehensive amenities and services provided at Arbor Glen.

MONTHLY EXPENSES	YOUR COST	ARBOR GLEN
HOUSEHOLD		
ELECTRIC	\$	INCLUDED
HEAT	\$	INCLUDED
AIR CONDITIONING	\$	INCLUDED
PREMIUM CABLE TV	\$	INCLUDED
PHONE & INTERNET	\$	INCLUDED
WATER & SEWER	\$	INCLUDED
PROPERTY TAXES	\$	INCLUDED
HOUSEHOLD SERVICES		
WEEKLY HOUSEKEEPING, LINENS & TOWELS	\$	INCLUDED
GARBAGE/TRASH REMOVAL/RECYCLING	\$	INCLUDED
LAWN MAINTENANCE	\$	INCLUDED
SNOW REMOVAL	\$	INCLUDED
HOME REPAIRS & MAINTENANCE	\$	INCLUDED
ADDITIONAL SERVICES		
FLEXIBLE DINING PLAN	\$	INCLUDED
LOCAL TRANSPORTATION	\$	INCLUDED
24-HOUR SECURITY	\$	INCLUDED
APARTMENT SPRINKLER SYSTEM	\$	INCLUDED
COMPREHENSIVE RESIDENT ALERT SYSTEM	\$	INCLUDED
TOTAL	\$	\$
	(Your Total)	(Monthly Fee)

Amenities AND SERVICES

that set us **APART**.

COMMUNITY SERVICES

- Weekly Housekeeping
- Weekly Linens & Towels
- Garbage Removal
- Recycling
- Snow Removal
- Lawn Maintenance
- Home Repairs
- Flexible Dining Plan
- Local Transportation
- 24-Hour Security
- Fire Sprinkler System
- Premium Cable Television
- Community-Wide Resident Hot Spot
- Pet-Friendly Community
- Planned Events

COMMUNITY AMENITIES

- Bistro & Club Room
- Private Dining Room
- Beauty Salon/Barber Shop
- Library with Computers
- Fitness Center
- Card & Game Room
- Quilting Room
- Meeting Room
- Private Movie Screening Room
- Auditorium
- Community Education Center
- Gift Shop
- Bocce Ball Court
- Horseshoe Pitching Court
- Resident Gardens

RESIDENT OPPORTUNITIES

- Companionship
- Pursuit of Individual Pastimes
- Outreach Opportunities
- Volunteerism
- Resident-Organized Activities
- Quaker-Based Values
- Cultural & Educational Programs
- Preventative Health Care
- Masterpiece Living Wellness Programming
- Intellectual & Spiritual Exchange



arbor glen

Welcoming ALL. Embracing YOU.

(908) 595-6600

100 Monroe Street
Bridgewater, NJ 08807
ArborGlen.org

A wise INVESTMENT

for a **SECURE FUTURE.**

FINANCIAL INFORMATION OVERVIEW

In light of your interest in becoming a resident of the Arbor Glen Continuing Care Retirement Community, we would like to provide you with the basic information regarding fees and how those relate to our wide variety of floor plans, and how Arbor Glen's financial arrangements work.

ENTRANCE FEE

Arbor Glen is an entrance fee community offering two types of entrance fee plans – a traditional plan and a 90% refundable plan. The entrance fee is a one-time payment made in two parts: 10% of the entrance fee is paid to hold your residence and begin the steps toward move in, and the balance is paid at move in. The entrance fee is most often covered by a home sale and is used to fund future care needs for residents, as well as community improvements and corporate reserves.

MONTHLY FEE

Each month, residents pay a single bill that covers almost all regular living expenses including phone, premium cable, Internet and a flexible dining plan. This fee keeps your expenses both predictable and economical.



arbor glen

Welcoming ALL. Embracing YOU.

(908) 595-6600

100 Monroe Street
Bridgewater, NJ 08807
ArborGlen.org

Amenities AND SERVICES

that set us **APART**.

COMMUNITY AMENITIES

ON SITE FOR YOUR CONVENIENCE

- Bistro & Club Room
- Private Dining Room
- Beauty Salon/Barber Shop
- Library with Computers
- Fitness Center
- Card & Game Room
- Quilting Room
- Meeting Room
- Private Movie Screening Room
- Auditorium
- Community Education Center
- Gift Shop
- Bocce Ball Court
- Horseshoe Pitching Court
- Resident Gardens

BENEFITS THAT TRULY MAKE A DIFFERENCE

- Companionship
- Pursuit of Individual Pastimes
- Outreach Opportunities
- Volunteerism
- Resident-Organized Activities
- Quaker-Based Values
- Cultural & Educational Programs
- Preventative Health Care
- Masterpiece Living Wellness Programming
- Resident Council
- Intellectual & Spiritual Exchange

COMMUNITY SERVICES

INCLUDED IN BASIC MONTHLY FEE

- Weekly Housekeeping
- Weekly Linens & Towels
- Garbage Removal
- Recycling
- Snow Removal
- Lawn Maintenance
- Home Repairs
- Flexible Dining Plan
- Local Transportation
- 24-Hour Security
- Fire Sprinkler System
- Planned Programs/Entertainment
- Heating, Air Conditioning & Electricity
- Water & Sewer
- Real Estate Tax
- Phone & Internet
- Premium Cable Television
- Community-Wide Resident Hot Spot
- Annual Cleaning & Home Maintenance
- Comprehensive Resident Alert System



arbor glen

Welcoming ALL. Embracing YOU.

(908) 595-6600

100 Monroe Street
Bridgewater, NJ 08807
ArborGlen.org

Masterpiece LIVING

WHAT IT IS AND HOW IT MAKES A MEANINGFUL DIFFERENCE

Masterpiece Living® is a nationally recognized lifestyle approach that enhances your overall wellness and vitality now and into the future. Based on findings from a 10-year study funded by the MacArthur Foundation in collaboration with the Mayo Clinic, Masterpiece Living is a lifestyle that promotes optimal health and wellness by fostering opportunities for continued growth and physical, intellectual, social and spiritual enrichment.

Over the past several years, Arbor Glen has focused on the overall wellness of its residents and improving their quality of life through dedicated exercise classes, on-site therapy services and healthy menu choices. With the addition of Masterpiece Living, not only is Arbor Glen the only community in New Jersey to bring the remarkable findings of this study to life, but it further helps residents make the choices that contribute to a long, healthy and active life.

WHAT DOES THIS MEAN FOR YOU?

Research on aging shows how you age is mostly dependent on lifestyle and the choices you make, rather than genetics. Motivated and empowered by this widespread knowledge, Arbor Glen strives to provide older adults and their families resources, services and living environments which will enhance growth and promote independence. As the direct descendant of the research on aging, Masterpiece Living is dedicated solely to these new aspirations of growth and potential.



Go to **www.MyMasterpieceLiving.com** and hear more about what Masterpiece Living is and what it could mean to you and your loved ones.

Or, visit **www.ArborGlen.org** to learn more about our active, engaging and vibrant lifestyle.



arbor glen

Welcoming ALL. Embracing YOU.

(908) 595-6600

100 Monroe Street
Bridgewater, NJ 08807
ArborGlen.org

Life Care.

You've heard the term. **NOW UNLOCK THE MEANING.**

What if you didn't have to worry about the possibility of needing health care services in the future? Or about the rising costs of long-term care? Your life today would seem richer, unencumbered by worry, and even more precious. Now, what if there were also financial advantages to this arrangement? That would be something you'd have to look into, wouldn't it?

- Priority access to assisted living, memory care and 24-hour, on-site skilled nursing care if you ever need it
- Care by people you know and who know you
- Predictable monthly expenses
- Peace of mind from having a plan in place that protects against your "what-ifs"
- Estate protection through our entrance fee program
- Potential tax benefits (consult your tax advisor)

ARBOR GLEN

THE MORE YOU KNOW, THE BETTER WE LOOK.

Arbor Glen brings you the life-changing benefits of life care as well as a distinct level of experience, commitment, comfort and value. There really is a difference.

CALL **(908) 595-6600** TO FIND OUT MORE.



arbor glen

Welcoming ALL. Embracing YOU.

(908) 595-6600

100 Monroe Street
Bridgewater, NJ 08807
ArborGlen.org

The Advantages ADD UP

LIFE AT ARBOR GLEN equals freedom, opportunity and peace of mind.

If you love the lifestyle you're leading now and would like to add some new possibilities, you might consider the unique advantages of life at Arbor Glen.

IT STARTS WITH THE ARBOR GLEN ADVANTAGE

- A community-wide code of respect that wraps attitude, behavior and high standards into one experience that delivers the ultimate level of service to our residents.

A BEAUTIFUL CAMPUS ON 28 ACRES

- Near shopping, restaurants, cultural and sporting events in Bridgewater, New Brunswick, Princeton and Morristown.
- Within close proximity of Somerset Medical Center.
- Convenient access to major highways as well as the train stations to New York City.

EXTENSIVE RESIDENT PROGRAMMING

- Wellness and education programs, special-interest groups, customized fitness programs, and amenities for recreation are just the beginning.

EXCLUSIVELY OFFERING MASTERPIECE LIVING

- Masterpiece Living promotes optimal health and wellness by fostering opportunities for continued growth and physical, intellectual, social and spiritual enrichment. And it's only available in New Jersey at Arbor Glen.

NOT-FOR-PROFIT SPONSORSHIP

- Arbor Glen's mission-driven board elects to reinvest revenues and resources into the community.

HONORING QUAKER VALUES

- Simplicity, peace, integrity, community, equality and stewardship are lived and practiced here every day.



arbor glen

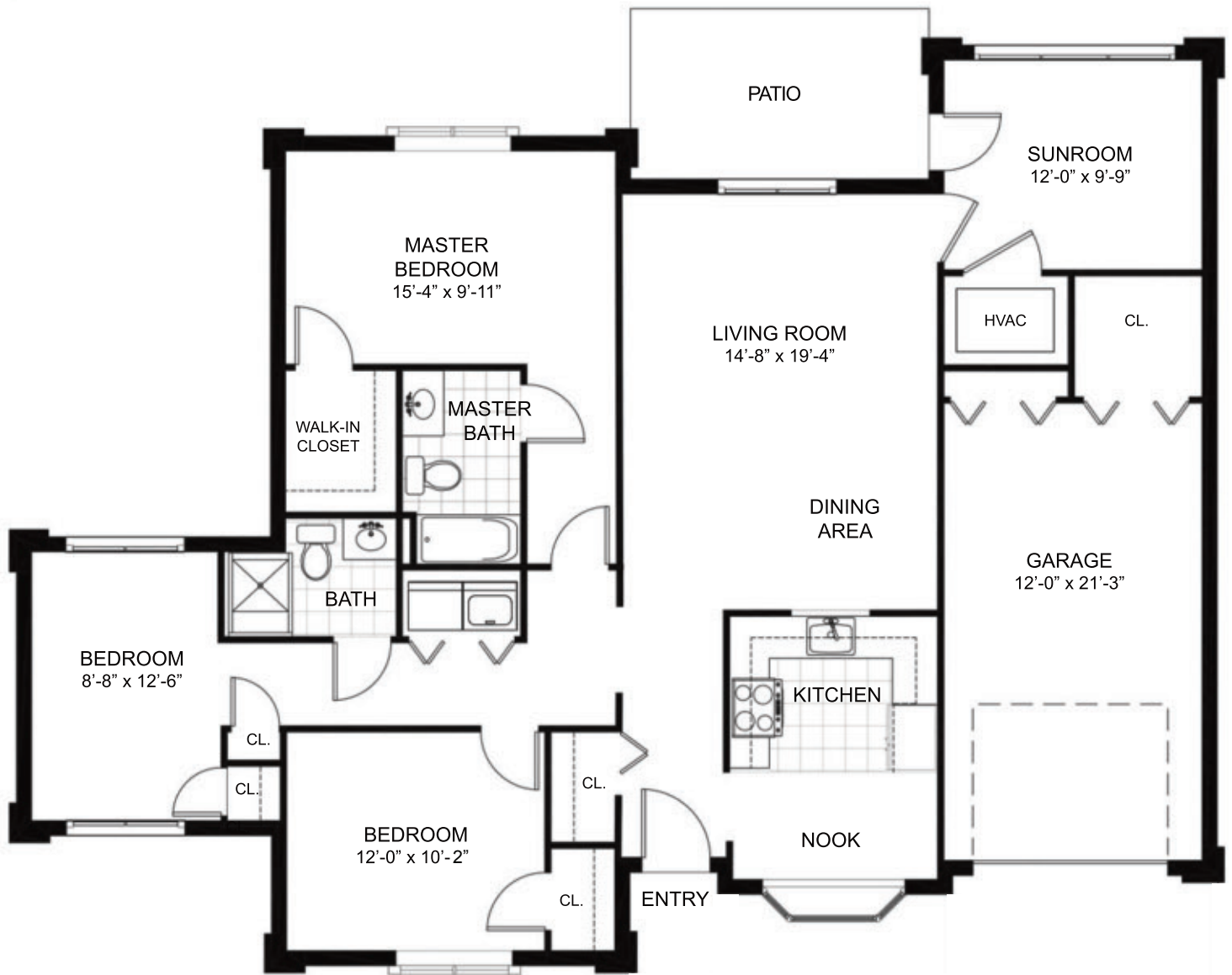
Welcoming ALL. Embracing YOU.

(908) 595-6600

100 Monroe Street
Bridgewater, NJ 08807
ArborGlen.org

Two-Bedroom Meadow Villa with Den

1,820 Square Feet (including 255 s.f. Garage)



Actual dimensions may vary slightly.

Two-Bedroom Villa with Basement

1,866 Square Feet (including 250 s.f. Garage)



Actual dimensions may vary slightly.

Two-Bedroom Villa without Basement

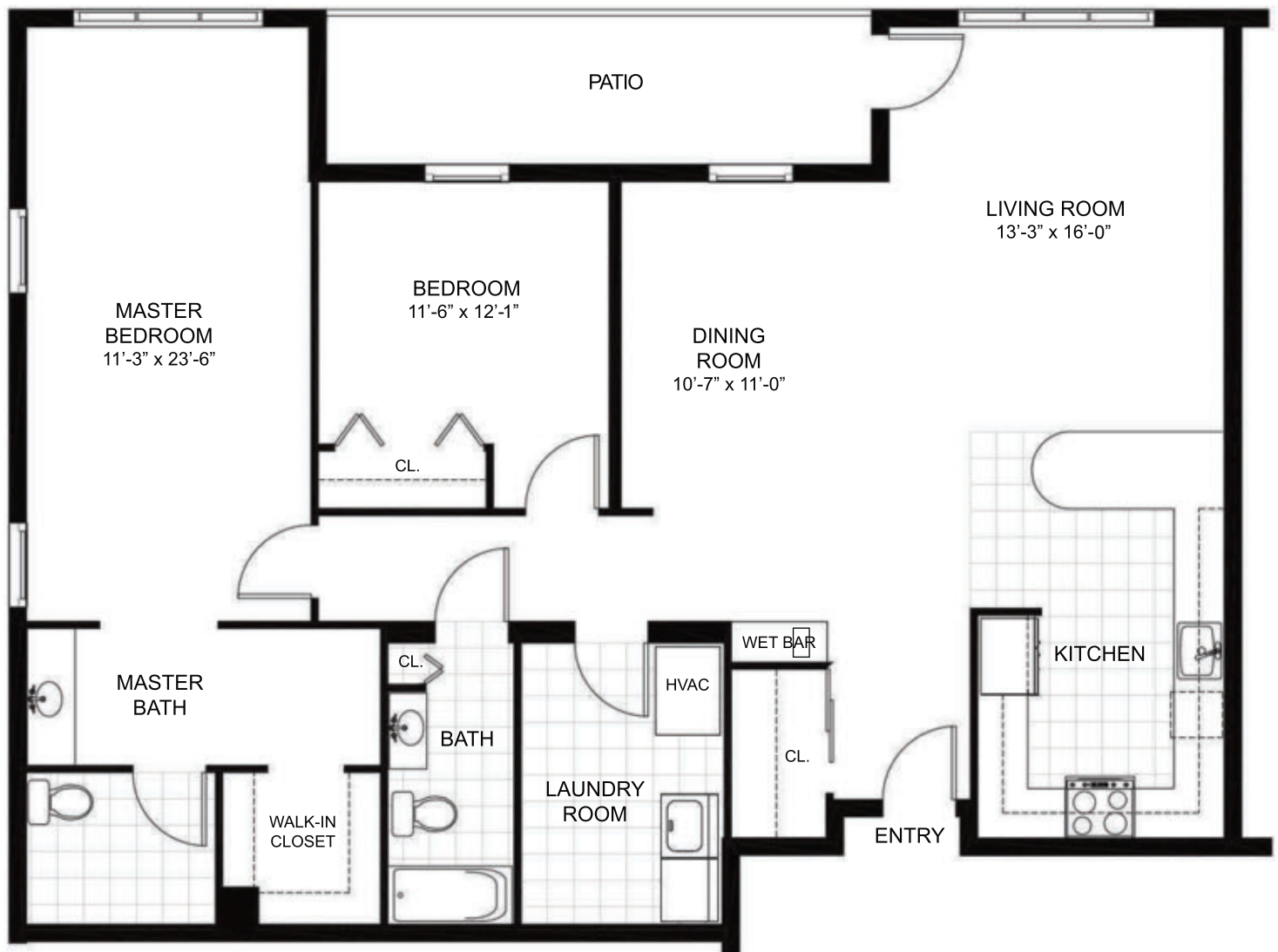
1,866 Square Feet (including 250 s.f. Garage)



Actual dimensions may vary slightly.

Apartment 430 Penthouse

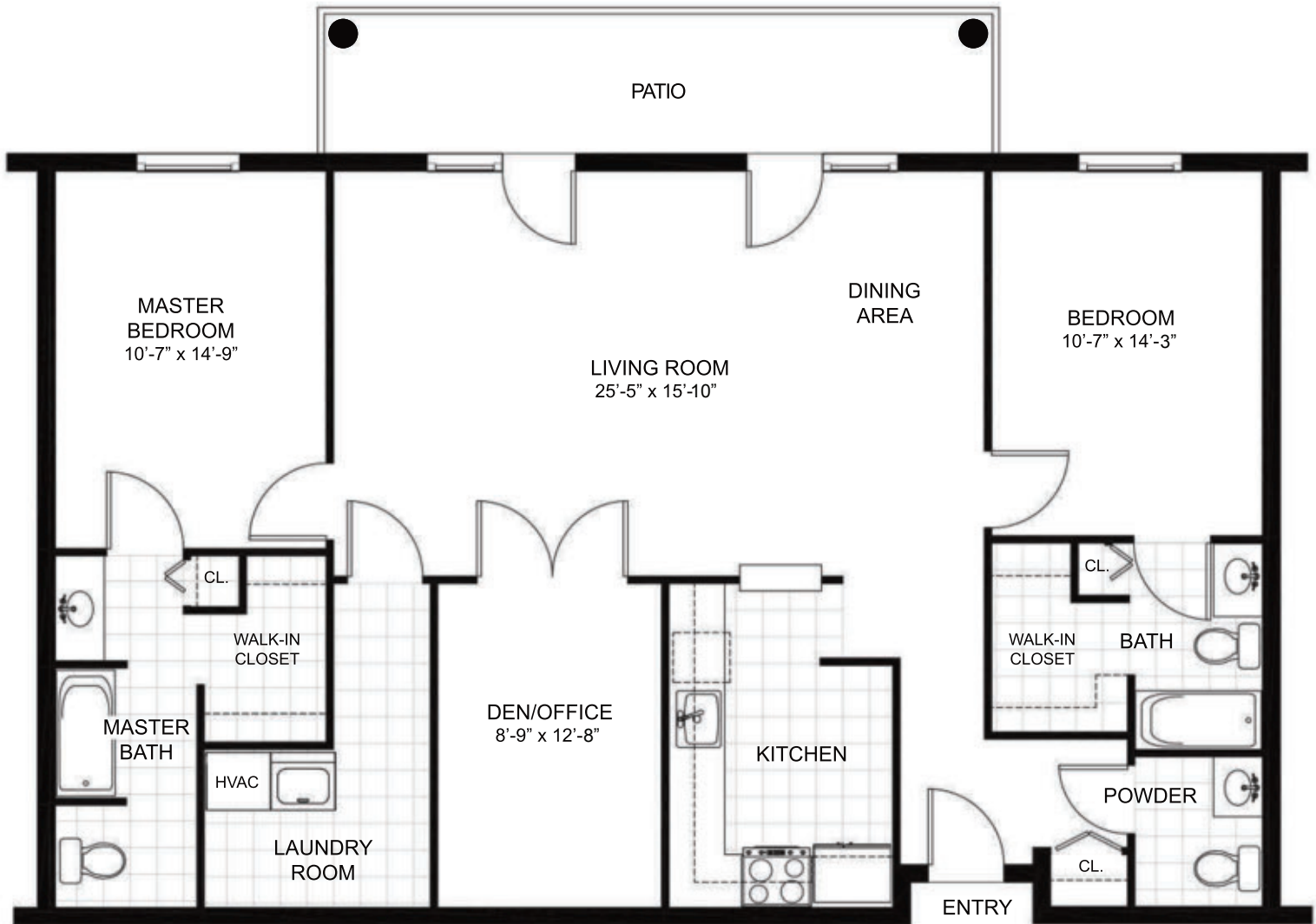
1,526 Square Feet



Actual dimensions may vary slightly.

Two-Bedroom Double Master

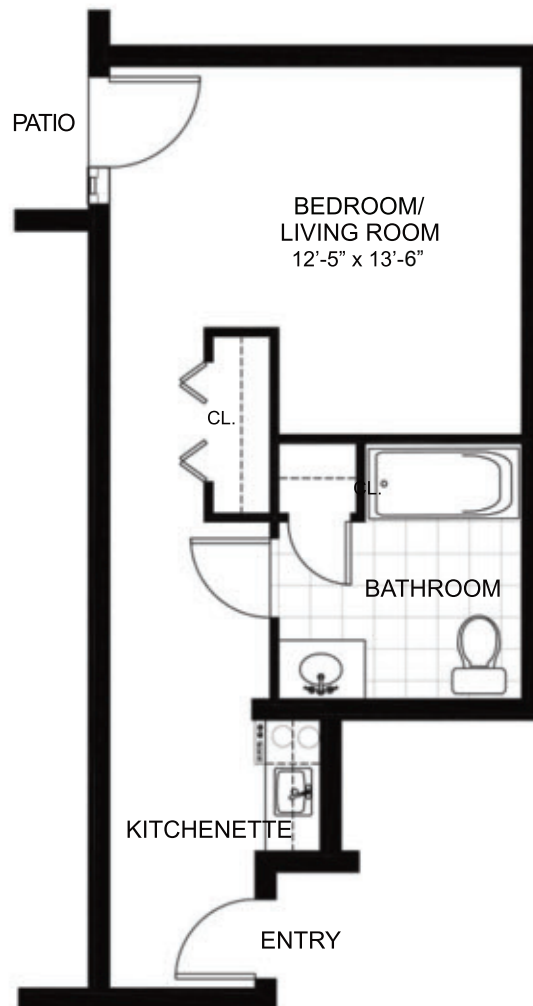
1,440 Square Feet



Actual dimensions may vary slightly.

Mini Studio

350 Square Feet



Actual dimensions may vary slightly.

One-Bedroom Garden Villa

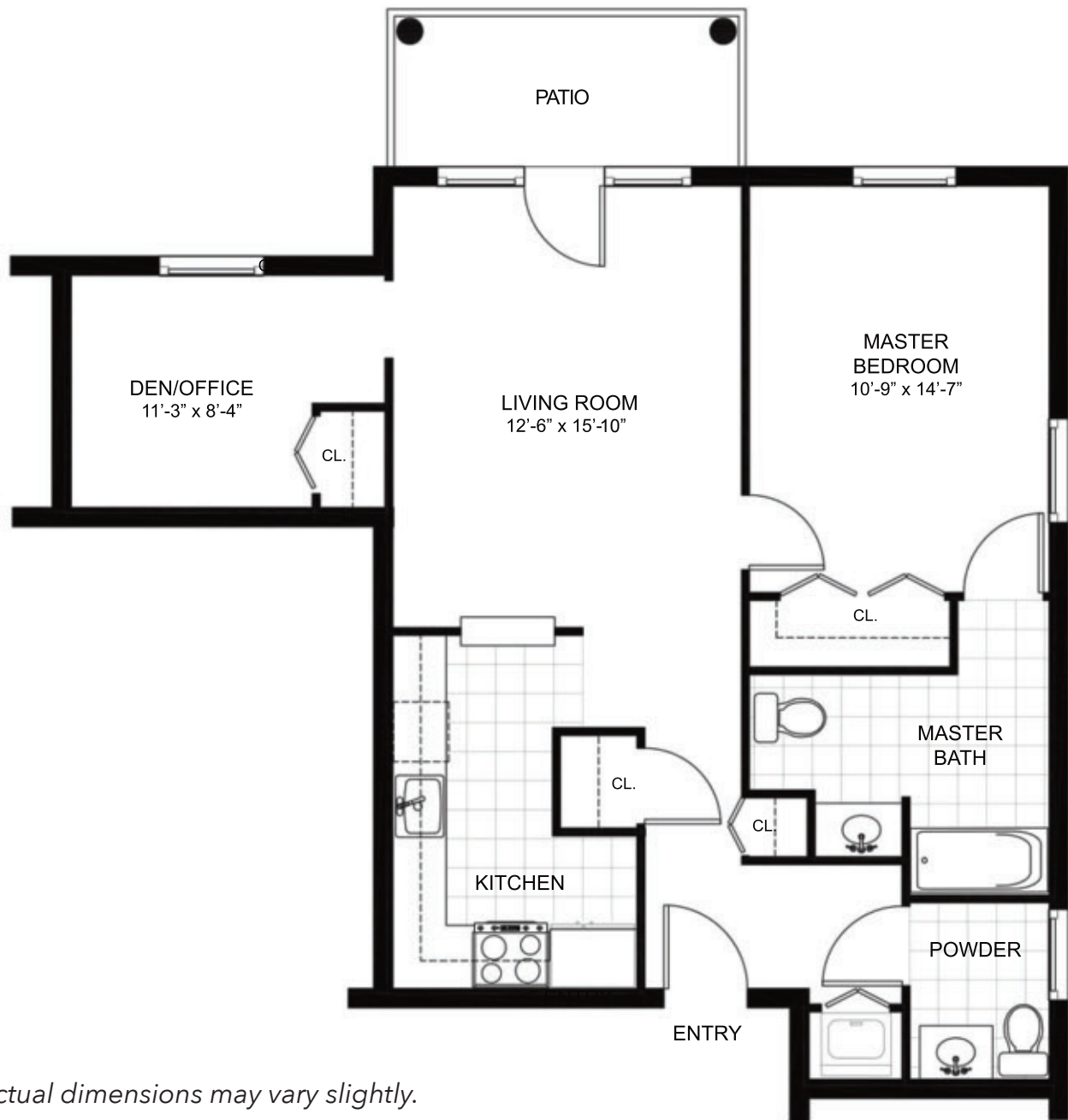
1,646 Square Feet (including 253 s.f. Garage)



Actual dimensions may vary slightly.

One-Bedroom Deluxe

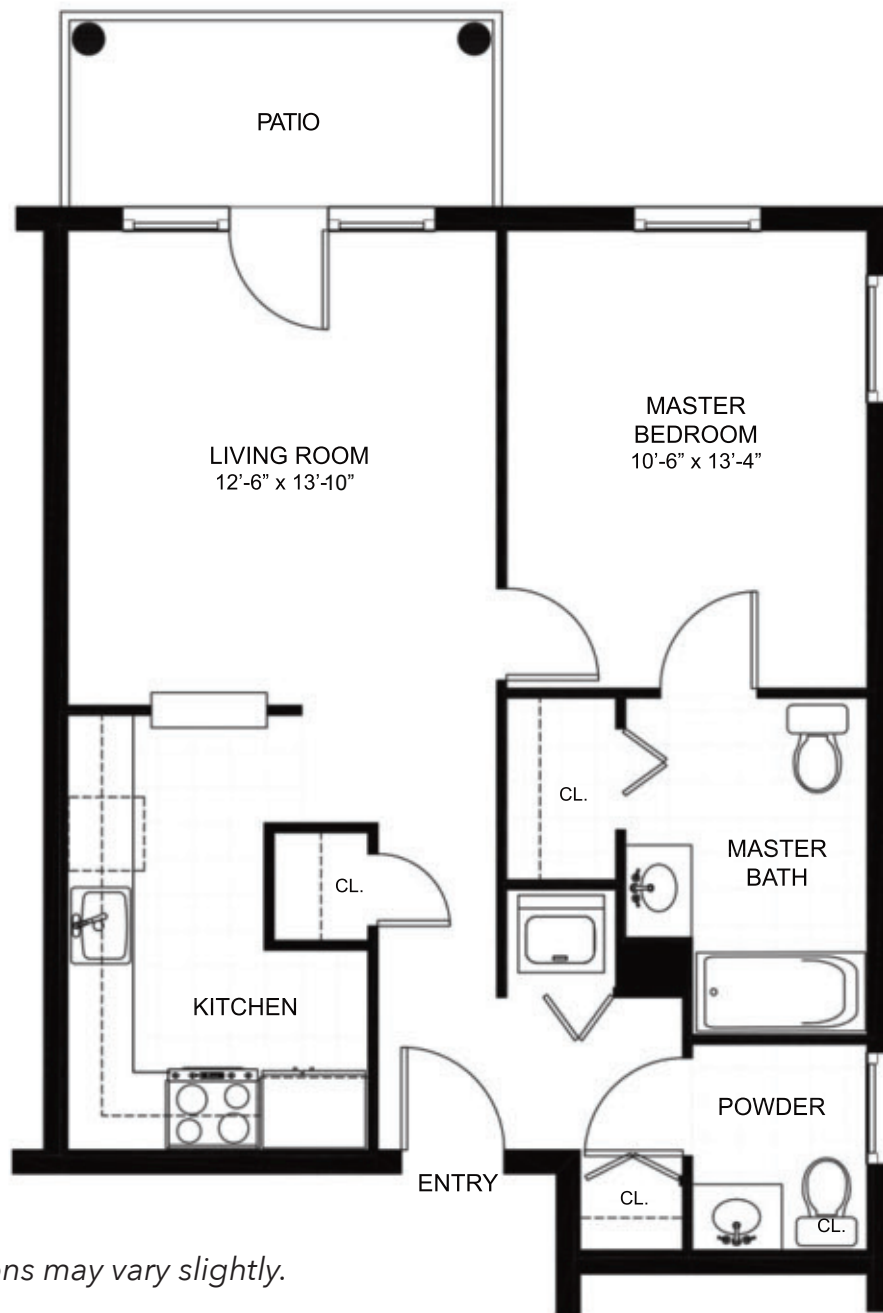
859 Square Feet



Actual dimensions may vary slightly.

One-Bedroom Extended

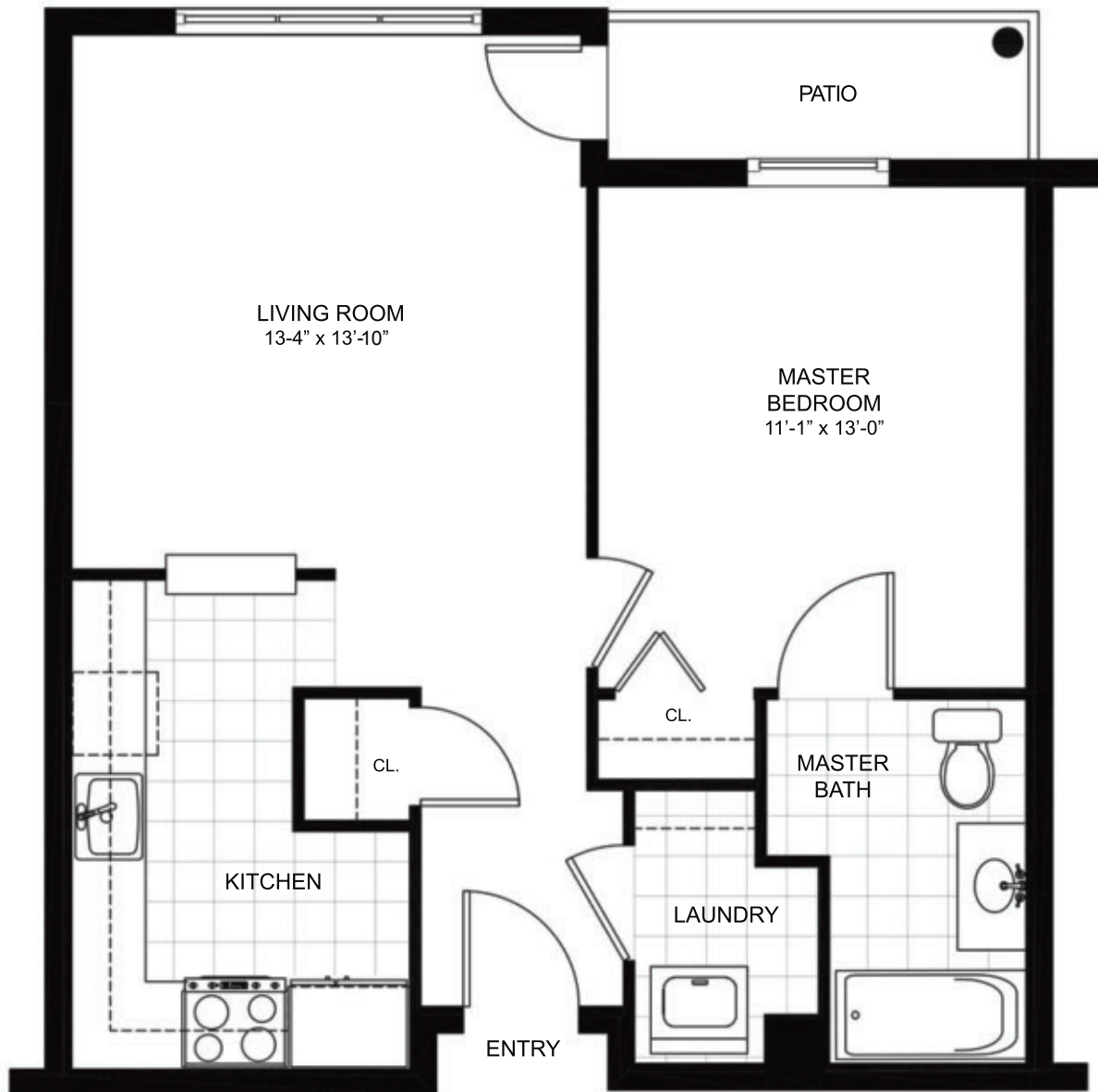
744 Square Feet



Actual dimensions may vary slightly.

One-Bedroom Small

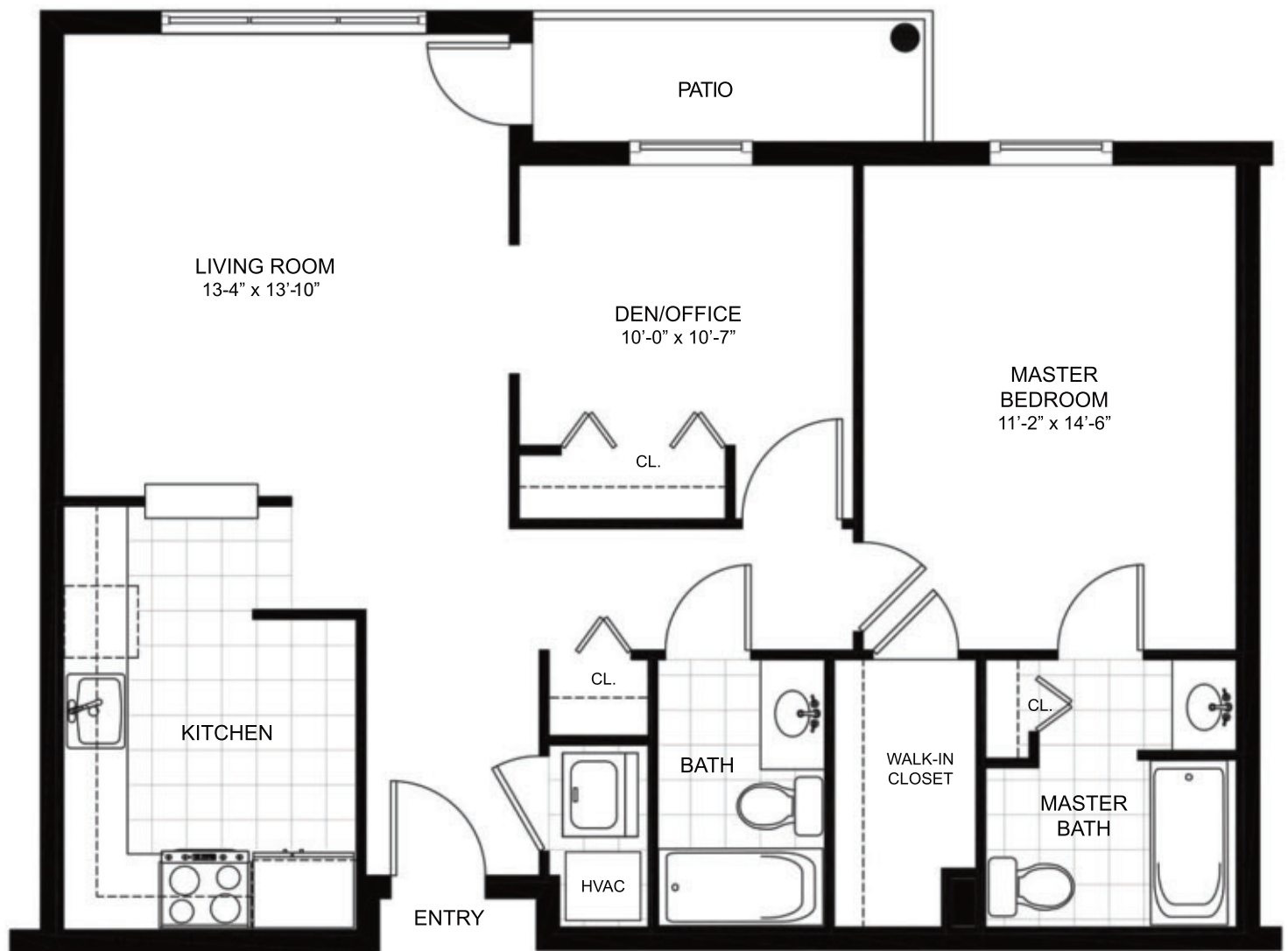
683 Square Feet



Actual dimensions may vary slightly.

One Bedroom with Den

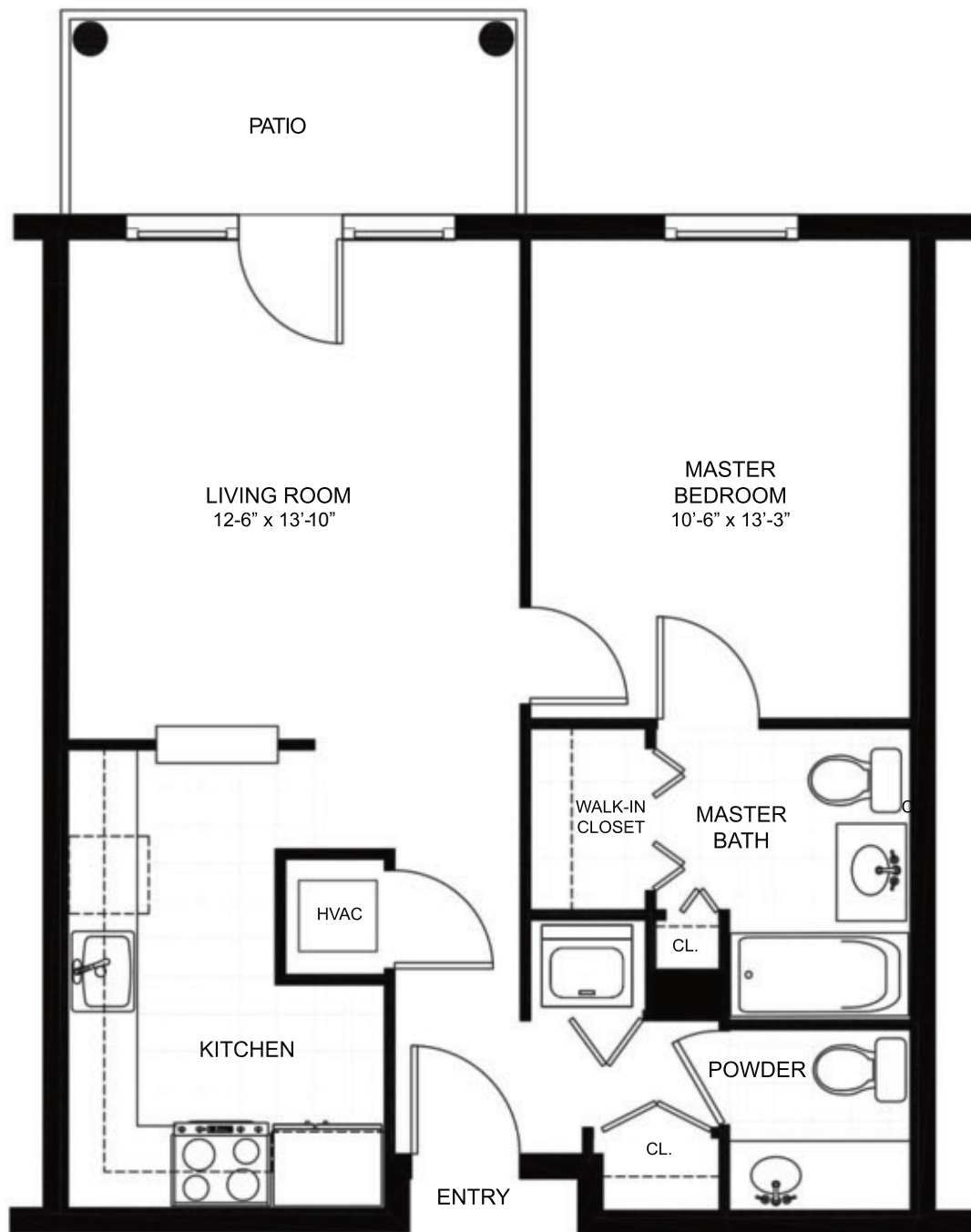
948 Square Feet



Actual dimensions may vary slightly.

One Bedroom

720 Square Feet



Actual dimensions may vary slightly.

Studio I

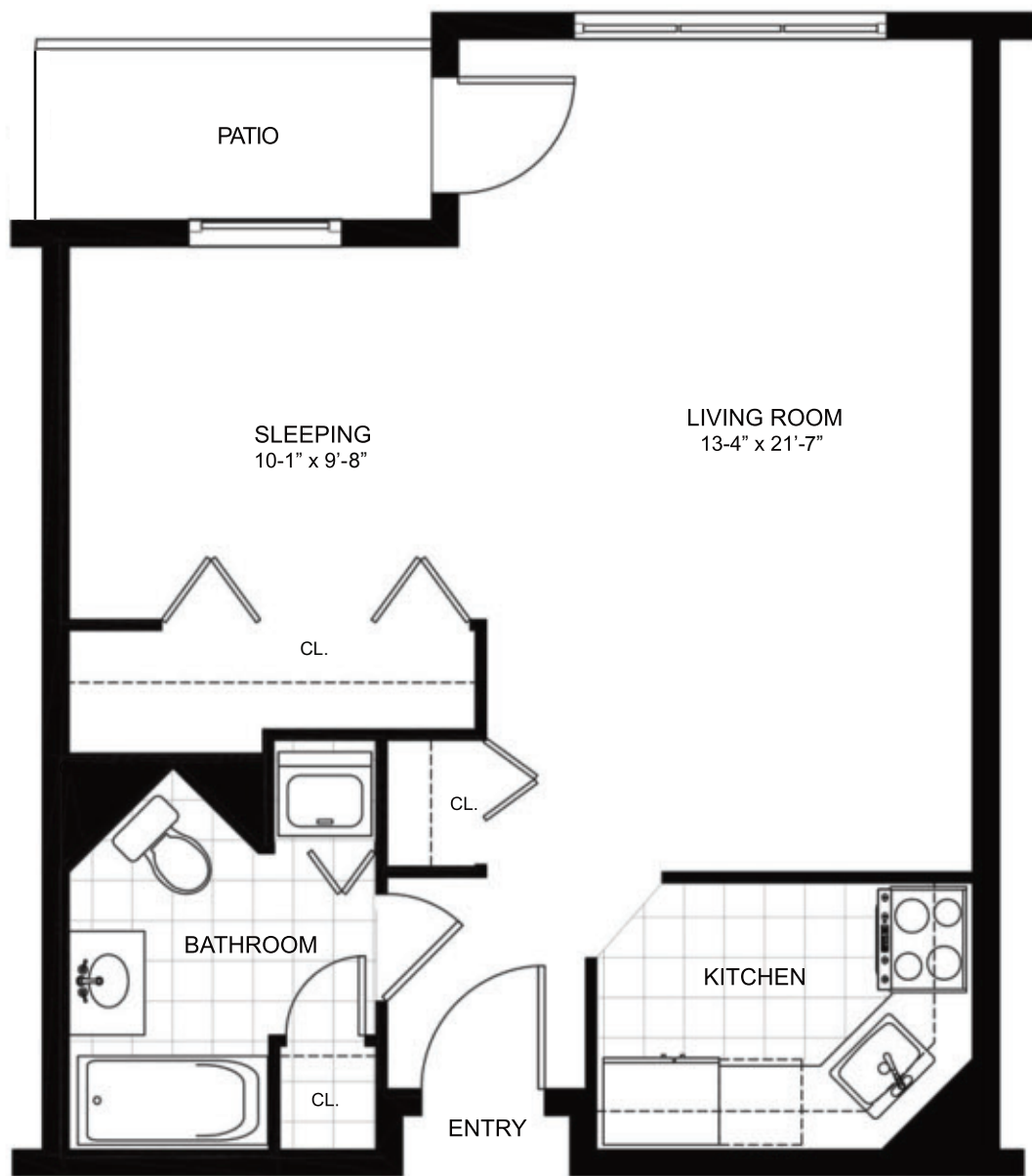
558 Square Feet



Actual dimensions may vary slightly.

Studio II

634 Square Feet



Actual dimensions may vary slightly.

Studio III

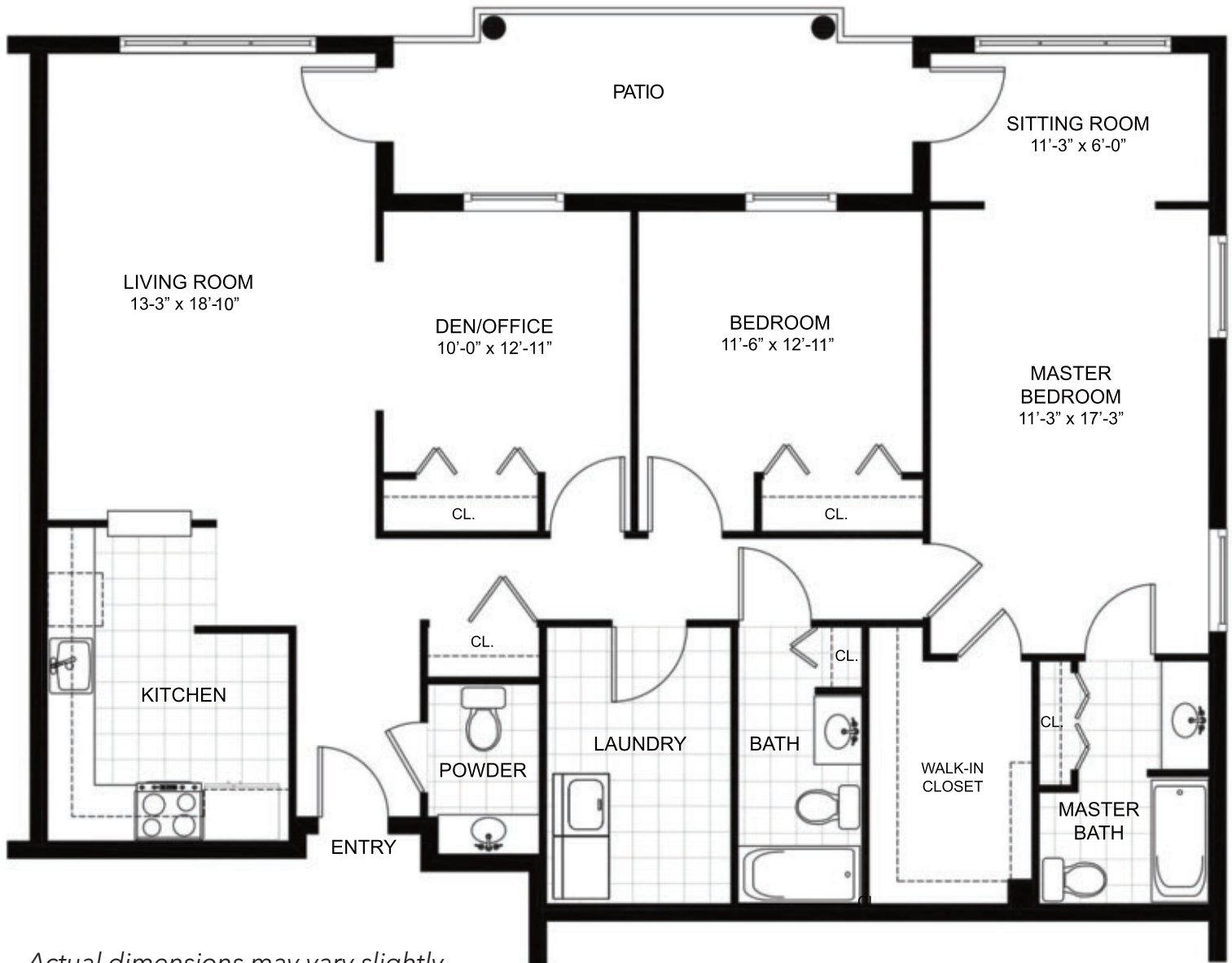
634 Square Feet



Actual dimensions may vary slightly.

Two-Bedroom with Den/Extended

1,526 Square Feet



Actual dimensions may vary slightly.

Two-Bedroom Meadow Villa

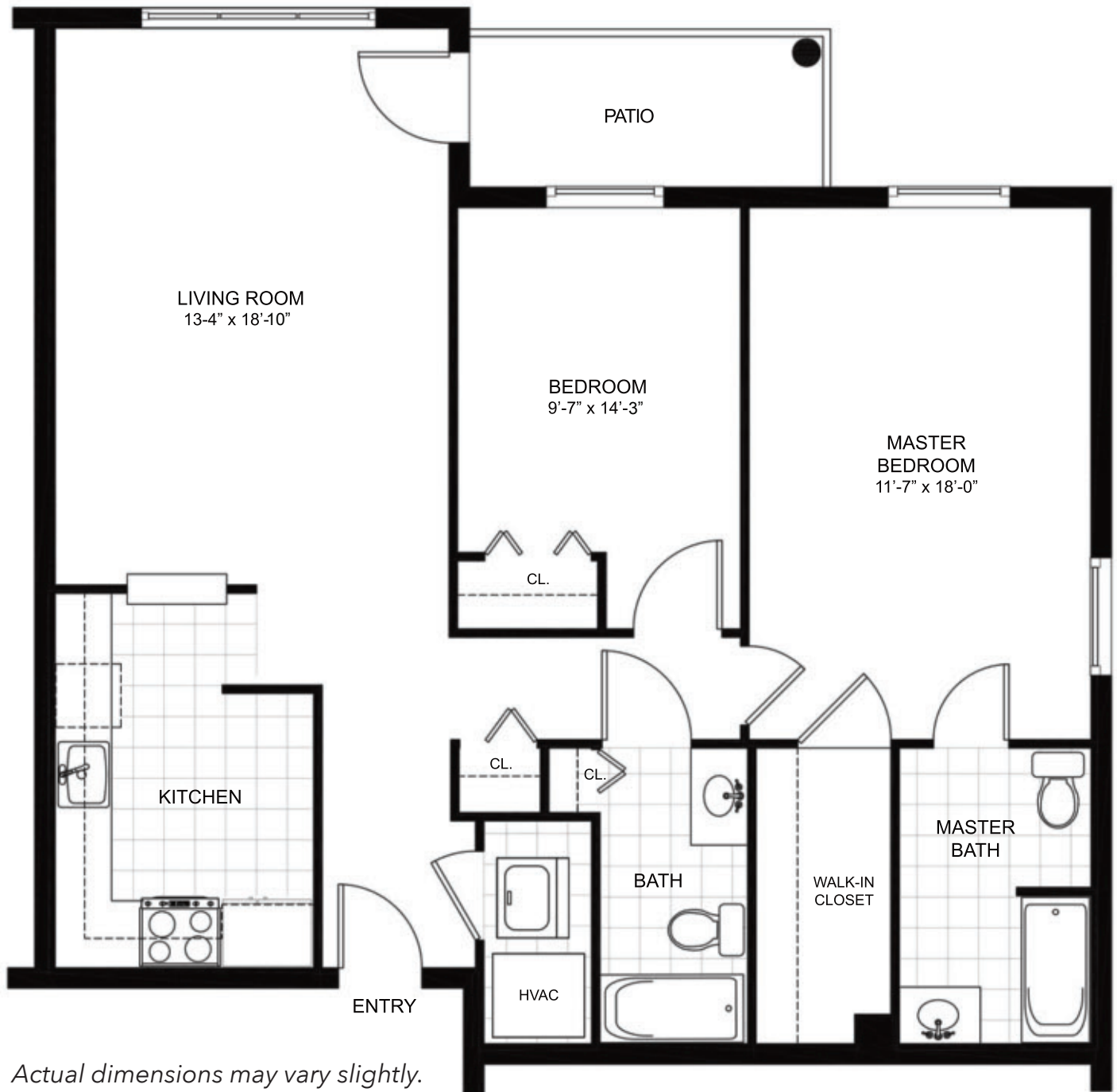
1,697 Square Feet (including 255 s.f. Garage)



Actual dimensions may vary slightly.

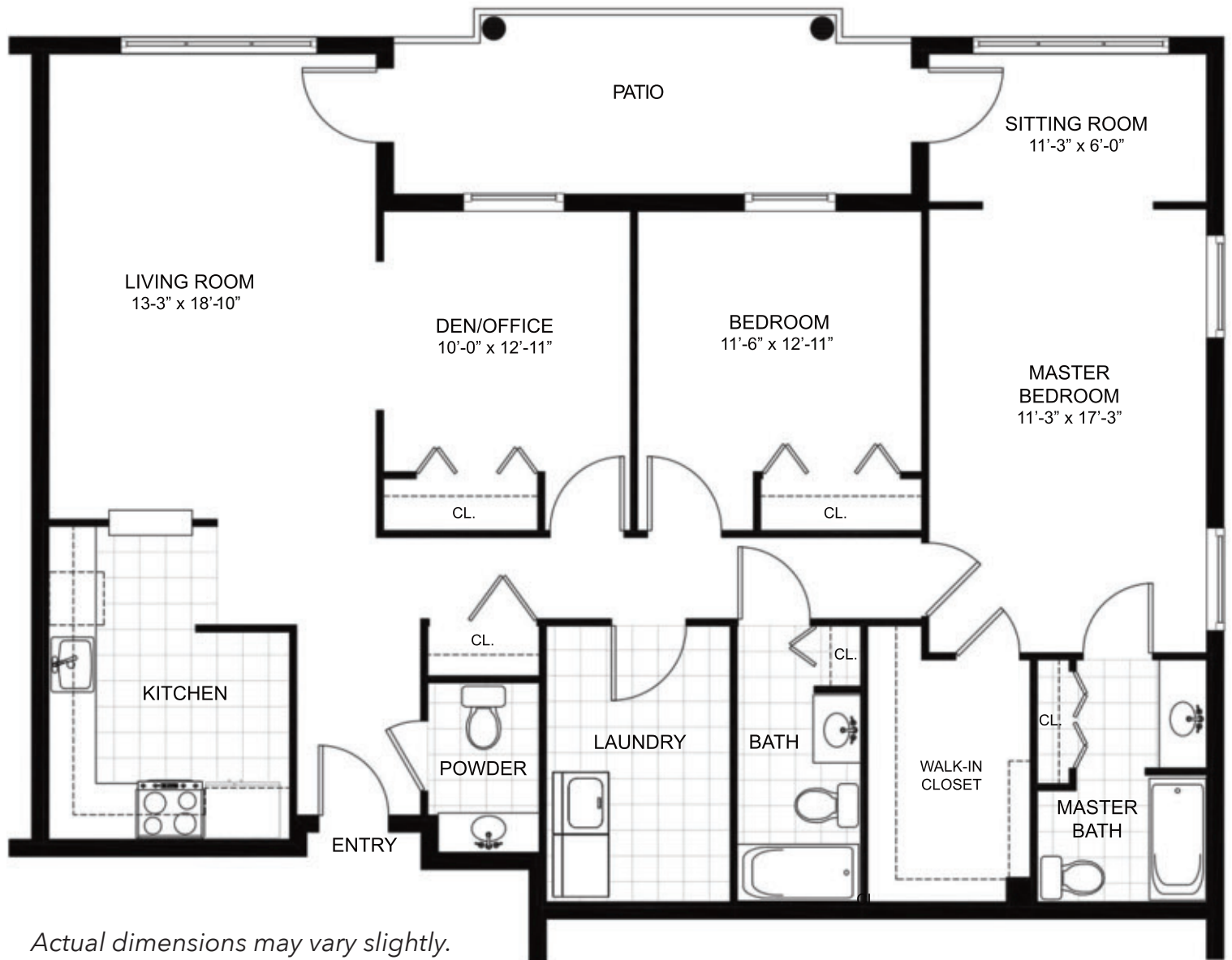
Two-Bedroom Extended

1,112 Square Feet



Two-Bedroom with Den

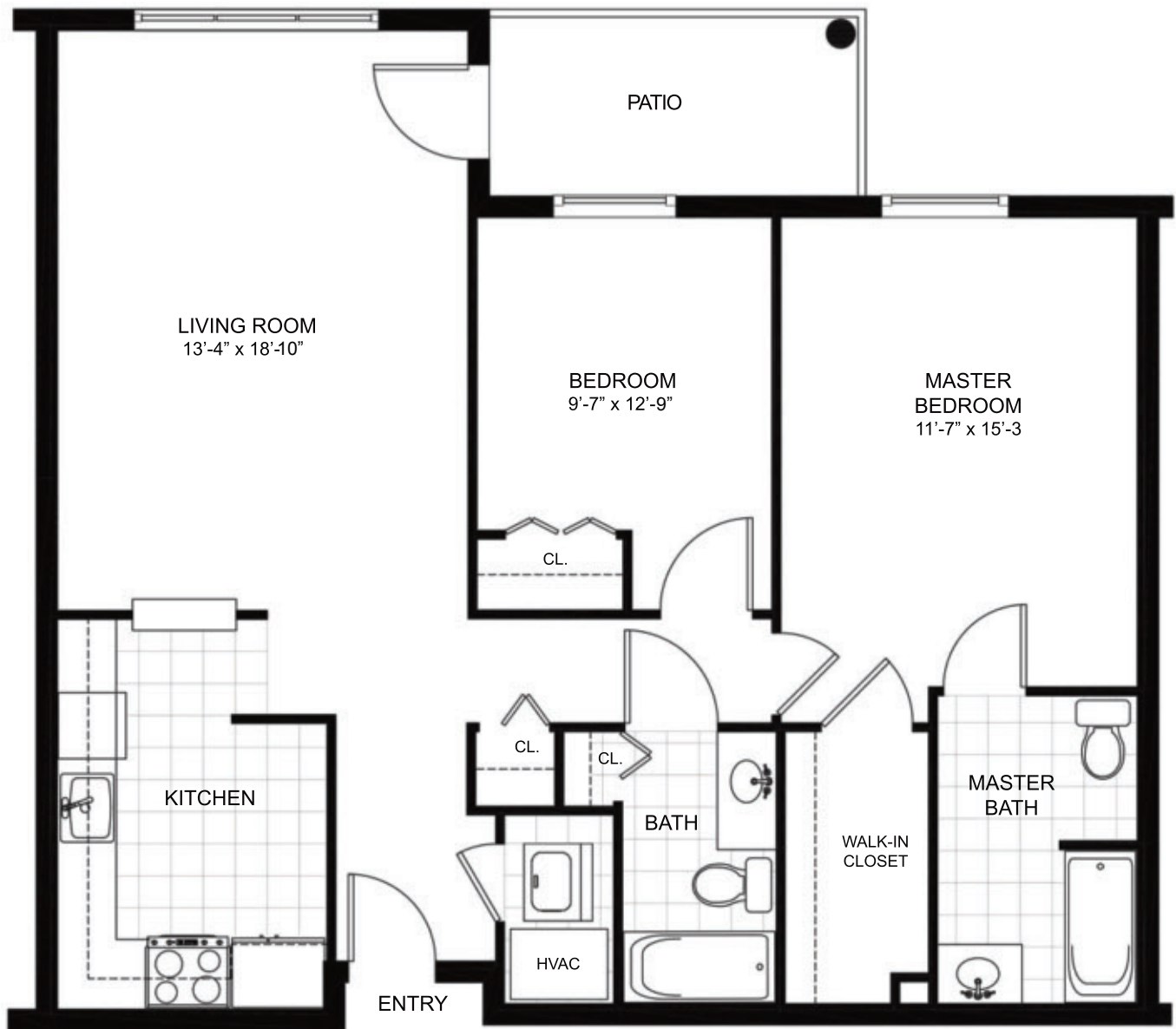
1,452 Square Feet



Actual dimensions may vary slightly.

Two Bedroom

1,056 Square Feet



Actual dimensions may vary slightly.

Welcome HOME

2016 Apartment Home & Villa Pricing

APARTMENT TYPE	ENTRANCE FEES TRADITIONAL PLAN	MSF	ENTRANCE FEES 90% REFUNDABLE PLAN	MSF	ENTRANCE FEES HYBRID TRADITIONAL	MSF
STUDIO	\$144,500	\$2,550	\$202,500	\$2,550	\$194,500	\$2,050
ONE BEDROOM	\$198,650	\$3,150	\$258,500	\$3,150	\$248,650	\$2,650
ONE BEDROOM/ DEN	\$267,950	\$3,950	\$375,000	\$3,950	\$317,950	\$3,450
TWO BEDROOM	\$299,500	\$4,475	\$419,500	\$4,475	\$349,500	\$3,975
TWO BEDROOM/ DEN	\$435,500	\$5,195	\$566,500	\$5,195	\$485,500	\$4,695
GARDEN VILLA	\$449,500	\$5,350	\$584,500	\$5,350	\$499,500	\$4,850
MEADOW VILLA	\$469,500	\$5,650	\$610,500	\$5,650	\$519,500	\$5,150

SECOND-PERSON ENTRANCE FEE \$25,000

SECOND-PERSON MONTHLY SERVICE FEE \$1,100

UNITARY MONTHLY FEE \$4,995

All fees are subject to change with notice.
©Arbor Glen. All rights reserved.



arbor glen

Welcoming ALL. Embracing YOU.

(908) 595-6600

100 Monroe Street
Bridgewater, NJ 08807
ArborGlen.org

Welcome TO WELLNESS

2016 Health Services Pricing

	ASSISTED LIVING	MEMORY CARE
COMMUNITY FEE	\$3,000	\$3,000
SECOND-PERSON FEE	N/A	N/A
STUDIO-L1	\$222/day	\$315/day
STUDIO-L2	\$258/day	\$353/day
STUDIO-L3	\$295/day	
MEDICATION FEE	\$0	\$0

SKILLED NURSING

SECOND-PERSON FEE	N/A
PRIVATE	\$427/day
SEMI-PRIVATE	\$397/day

All fees are subject to change with notice.
©Arbor Glen. All rights reserved.



arbor glen

Welcoming ALL. Embracing YOU.

(908) 595-6600

100 Monroe Street
Bridgewater, NJ 08807
ArborGlen.org

Residential Apartments

FIRST FLOOR



Apartment Color

- Studio
- One Bedroom
- One Bedroom/Den
- Two Bedroom
- Two Bedroom/Den
- Villa



arbor glen

Welcoming ALL. Embracing YOU.

(908) 595-6600

100 Monroe Street
Bridgewater, NJ 08807
ArborGlen.org

Residential Apartments

SECOND FLOOR



Apartment Color

- Studio
- One Bedroom
- One Bedroom/Den
- Two Bedroom
- Two Bedroom/Den
- Villa



arbor glen

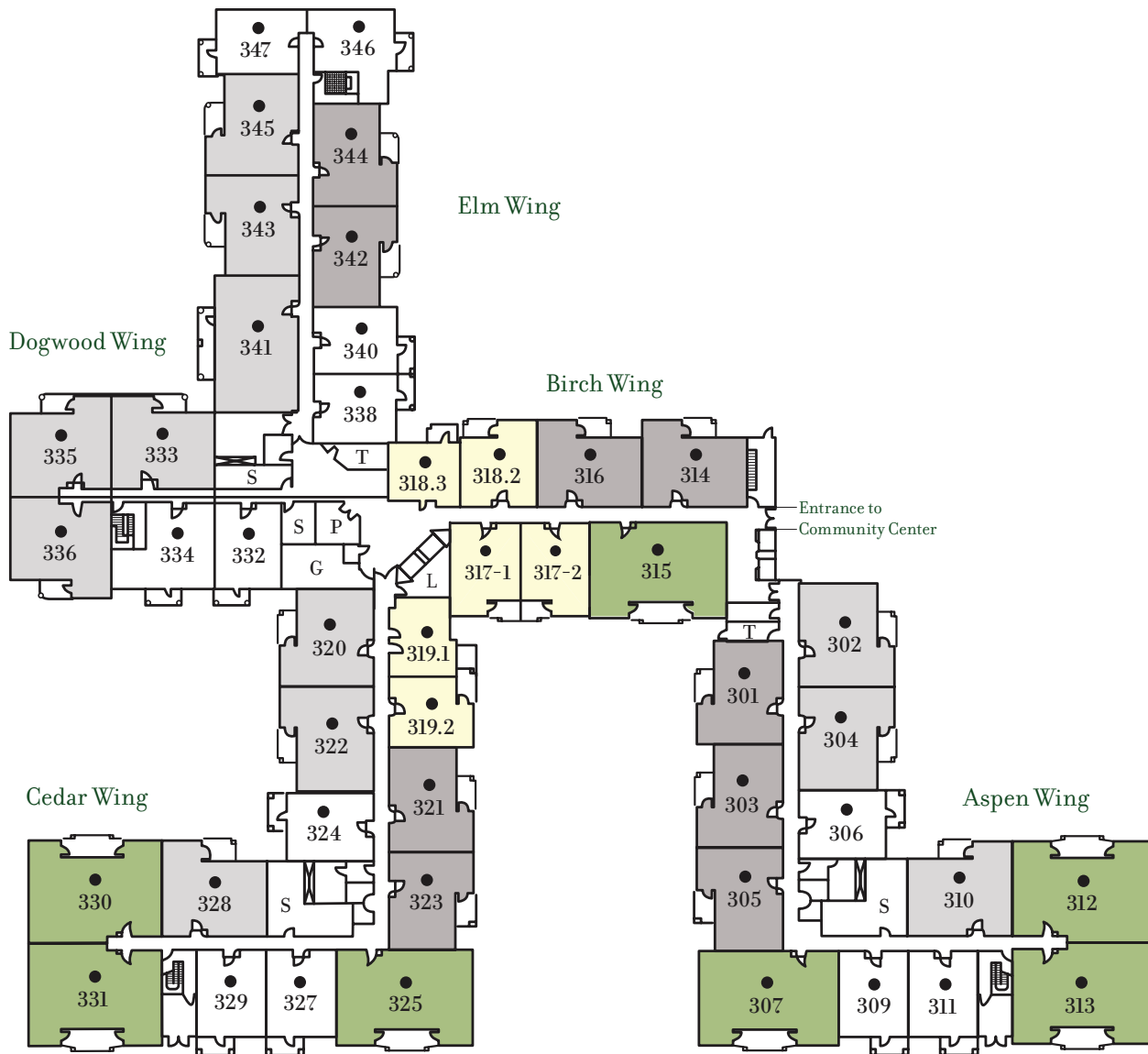
Welcoming ALL. Embracing YOU.

(908) 595-6600

100 Monroe Street
Bridgewater, NJ 08807
ArborGlen.org

Residential Apartments

THIRD FLOOR



E – Elevator
L – Laundry
P – Parlor
S – Storage
T – Trash

Apartment Color

- Studio
- One Bedroom
- One Bedroom/Den
- Two Bedroom
- Two Bedroom/Den
- Villa



arbor glen

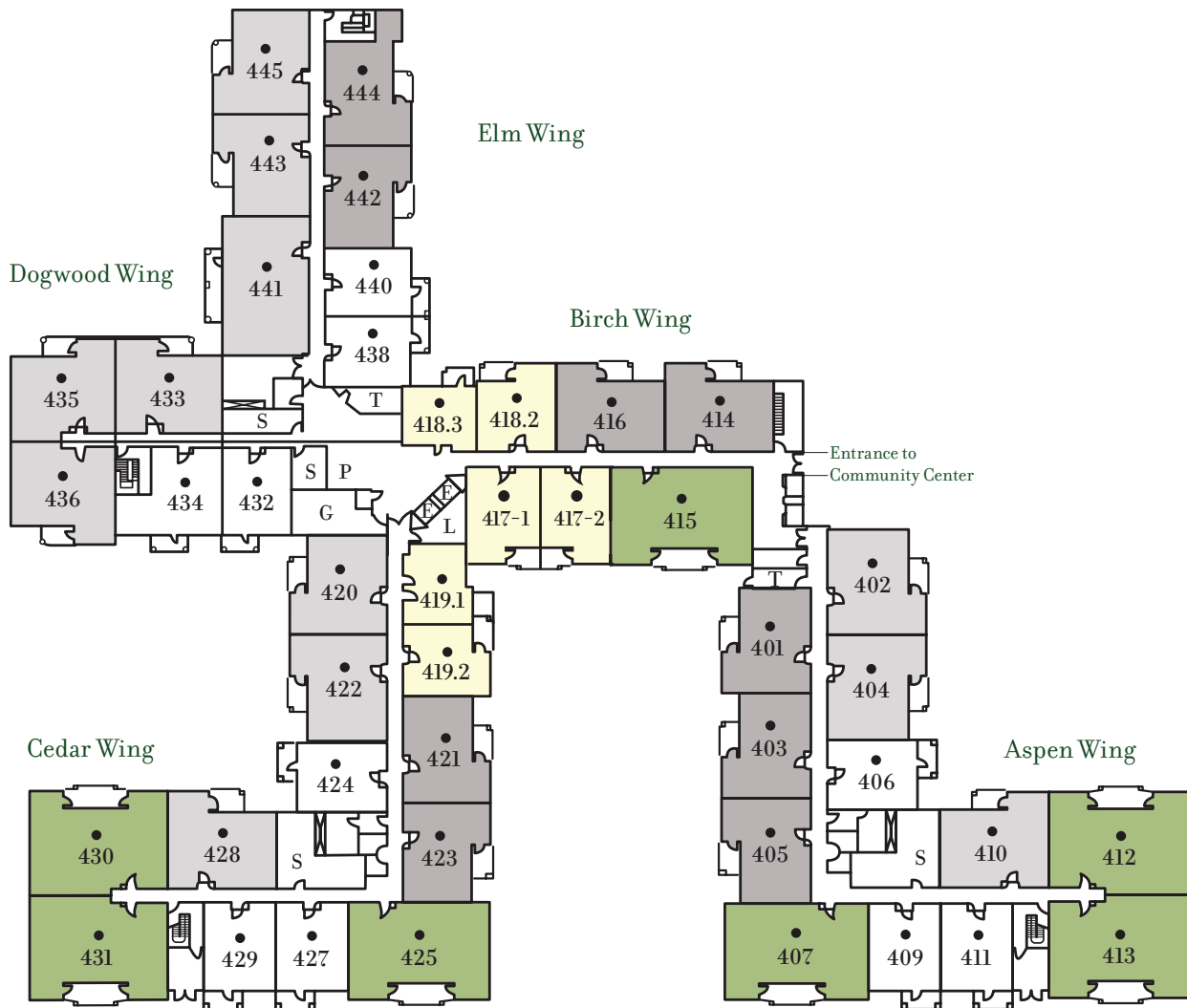
Welcoming ALL. Embracing YOU.

(908) 595-6600

100 Monroe Street
Bridgewater, NJ 08807
ArborGlen.org

Residential Apartments

FOURTH FLOOR



E – Elevator
L – Laundry
P – Parlor
S – Storage
T – Trash

Apartment Color

- Studio
- One Bedroom
- One Bedroom/Den
- Two Bedroom
- Two Bedroom/Den
- Villa



arbor glen

Welcoming ALL. Embracing YOU.

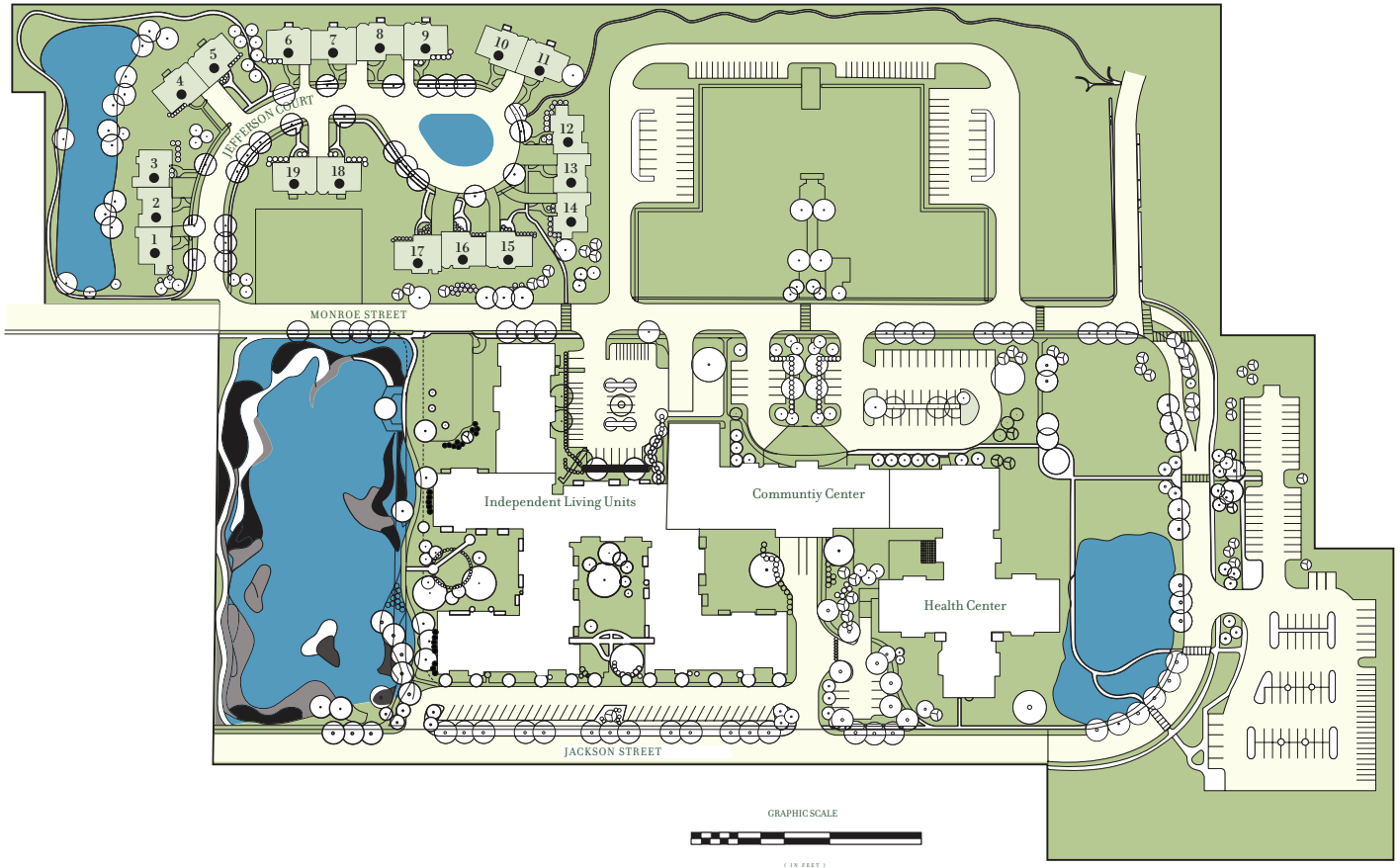
(908) 595-6600

100 Monroe Street
Bridgewater, NJ 08807
ArborGlen.org

Sponsored by Friends Retirement Concepts, Inc.



Site Plan



arbor glen

Welcoming ALL. Embracing YOU.

(908) 595-6600

100 Monroe Street
Bridgewater, NJ 08807
ArborGlen.org

Sponsored by Friends Retirement Concepts, Inc.

